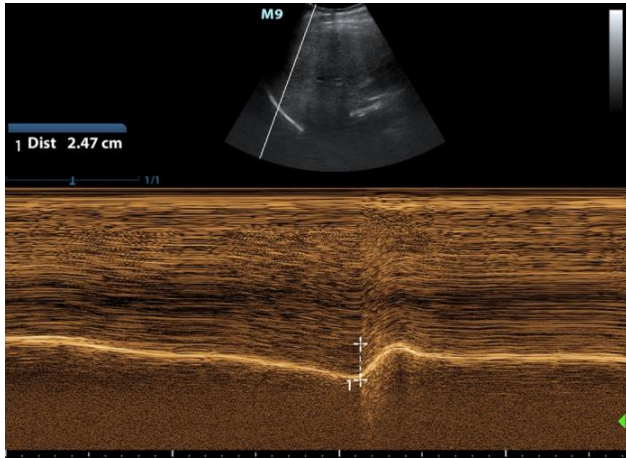
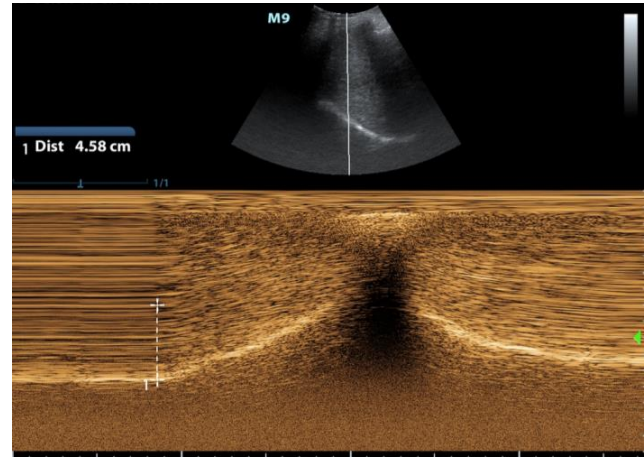


## Diaphragmatic US Assessment

### Dome movement



Quiet breathing > 1.6 cm

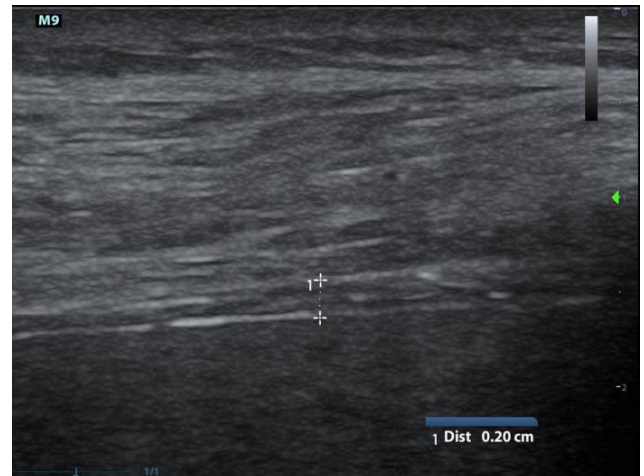


Deep breathing > 4.4 cm

### Diaphragm Thickness ( $\Delta tdi$ )



End inspiration



End exhalation

$$\Delta tdi = \frac{tdi \text{ end insp} - tdi \text{ end exhal}}{tdi \text{ end exhal}}$$

Normal > 20%