


Long-term incidence of chronic postsurgical pain after thoracic surgery for lung cancer: a 10-year single-center retrospective study

Susie Yoon,^{1,2} Won-Pyo Hong,¹ Hyundeok Joo,³ Hansol Kim,¹ Samina Park,^{4,5} Jae-Hyon Bahk,^{1,2} Ho-Jin Lee ^{1,2}

► Additional material is published online only. To view please visit the journal online (<http://dx.doi.org/10.1136/rapm-2020-101292>).

¹Department of Anesthesiology and Pain Medicine, Seoul National University Hospital, Seoul, The Republic of Korea

²Department of Anesthesiology and Pain Medicine, Seoul National University College of Medicine, Seoul, The Republic of Korea

³Seoul National University College of Medicine, Seoul, The Republic of Korea

⁴Department of Thoracic and Cardiovascular Surgery, Seoul National University Hospital, Seoul, The Republic of Korea

⁵Department of Thoracic and Cardiovascular Surgery, Seoul National University College of Medicine, Seoul, The Republic of Korea

Correspondence to

Dr Ho-Jin Lee, Department of Anesthesiology and Pain Medicine, Seoul National University College of Medicine, Seoul, The Republic of Korea; zenerdiode03@gmail.com

Received 9 January 2020

Revised 19 February 2020

Accepted 22 February 2020

Published Online First

17 March 2020

ABSTRACT

Background The long-term incidence of chronic postsurgical pain (CPSP) after thoracic surgery has not yet been reported.

Methods We retrospectively reviewed the electronic medical records of 4218 consecutive patients who underwent thoracic surgery for lung cancer between 2007 and 2016. We evaluated the long-term incidence of CPSP after thoracic surgery at intervals of 3 months for 36 months. A Cox proportional hazard regression analysis was performed to investigate the predictors of CPSP after thoracic surgery.

Results A total of 3200 patients were included in the analysis. Of these, 459 (14.3%) and 558 (17.4%) patients were diagnosed with CPSP within 3 and 36 months after surgery, respectively. Furthermore, the incidence of CPSP decreased over time. Additionally, 99 (3.1%) patients were newly diagnosed with CPSP at least 6 months after surgery. Female sex (HR 1.20, 95% CI 1.00 to 1.43; $p=0.04$), longer duration of surgery (HR 1.11, 95% CI 1.03 to 1.20; $p<0.01$), higher 11-point Numeric Rating Scale score at first outpatient visit after surgery (HR 1.29, 95% CI 1.24 to 1.34; $p<0.001$), postoperative chemotherapy (HR 1.55, 95% CI 1.26 to 1.90; $p<0.001$), and postoperative radiation therapy (HR 1.35, 95% CI 1.05 to 1.74; $p=0.02$) were significant predictors of CPSP for 36 months after surgery.

Conclusion Our study showed a decreasing trend in the incidence of CPSP as well as delayed-onset or recurrent CPSP after thoracic surgery. A better understanding of the progression of CPSP after thoracic surgery may provide important information on its prediction and treatment.

INTRODUCTION

Chronic postsurgical pain (CPSP) refers to pain that persists beyond the expected recovery period in the area associated with surgery.^{1,2} Its incidence has been reported to be 3%–85%, and varies greatly depending on the type of surgery or the definition of CPSP.³ The risk factors for CPSP include intraoperative nerve injury, surgery duration, pre-existing pain, younger age, female sex, genetic predisposition, psychological vulnerability, and severity of acute postoperative pain.⁴ CPSP has been associated with functional disability, poor recovery, and impaired quality of life.⁵ It has also been associated with prolonged opioid use after surgery, which leads to opioid-induced adverse events.⁶

CPSP is a relatively common complication after thoracic surgery, with an incidence rate as high as 65%.³ A meta-analysis of prospective studies reported that the incidence of CPSP at 3 and 6 months after thoracotomy was 57% and 47%, respectively.⁷ Although the introduction of video-assisted thoracic surgery (VATS) has resulted in minimal incision sites and decreased acute postoperative pain, CPSP remains an important postoperative complication in patients after thoracic surgery.⁸ In addition, as early-stage lung cancer detection has increased with the introduction of screening tests, lung surgery, which is a standard treatment for early-stage lung cancer, has been increasingly performed.⁹ The early diagnosis and treatment for lung cancer have led to an increase in the survival rate among patients with lung cancer.¹⁰ Therefore, CPSP related to the quality of life after surgery has become an important issue for patients with lung cancer.¹¹

According to the recently proposed updated criteria of CPSP, it could either be a continuation of acute postoperative pain or pain that occurs after an asymptomatic period.¹ However, most previous studies have reported point incidence rather than a long-term trend. Therefore, we investigated the long-term incidence of CPSP after thoracic surgery with respect to delayed-onset and recurrent CPSP. To this end, we investigated the trend of CPSP incidence after thoracic surgery at intervals of 3 months for 36 months. A multivariable Cox proportional hazard regression analysis was performed to investigate the perioperative predictors of CPSP after thoracic surgery.

METHODS

The requirement for informed consent was waived due to the retrospective design of this study.

We retrospectively reviewed the electronic medical records of patients aged ≥ 18 years who underwent thoracic surgery for lung cancer at our hospital between January 2007 and December 2016. Data of all patients who satisfied the above conditions during the study period were collected without an a priori sample size calculation. During the 10-year study period, 4218 adult patients underwent lung surgery at our hospital. The exclusion criteria were as follows: (1) patients with previous thoracic surgery ($n=47$); (2) those who underwent reoperation at the ipsilateral site during the study period ($n=134$); (3) those who underwent surgical



© American Society of Regional Anesthesia & Pain Medicine 2020. No commercial re-use. See rights and permissions. Published by BMJ.

To cite: Yoon S, Hong W-P, Joo H, et al. *Reg Anesth Pain Med* 2020;**45**:331–336.

methods other than VATS and thoracotomy (sternotomy, n=8; clamshell incision, n=2); (4) those who were not followed up for at least 3 months after surgery; and (5) those with inadequate medical records related to pain intensity (n=827). The remaining 3200 patients were finally analyzed.

Data on demographics, medical history, anesthesia/surgery-related parameters, postoperative pain-related parameters, and adjuvant chemotherapy and radiation therapy, which have been associated with chronic postoperative pain, were collected from the Seoul National University Hospital Patients Research Environment (SUPREME) system (table 1).⁴ We investigated whether the patients underwent the intraoperative intercostal nerve blockade or percutaneous wound injection based on the electronic medical records documented by the surgeons.

Preoperative administrations of oral analgesics and antipsychotics were investigated instead of pre-existing chronic pain and psychiatric diseases, respectively, due to the lack of detailed information about these diseases. We also investigated the treatments that the patients received for CPSP during the study period. The medication included strong opioids (morphine, oxycodone, hydrocodone, hydromorphone, or transdermal fentanyl patch), weak opioids (tramadol or a tramadol/acetaminophen combination), non-steroidal anti-inflammatory agents, acetaminophen, antidepressants (tricyclic antidepressants or serotonin-norepinephrine reuptake inhibitors), anticonvulsants (gabapentin or pregabalin), and transdermal lidocaine patch. Prolonged opioid use after surgery was defined as one or more strong opioid prescriptions for more than 3 months after surgery.¹² We did not attempt to estimate missing data. All patients, including those with missing values, were included in the analyses with the available data.

Patients received total intravenous anesthesia consisting of propofol and remifentanyl, or inhalational anesthesia with volatile agent and supplementary opioids. The type of anesthesia was selected based on the preference of the anesthesiologist. Intravenous patient-controlled analgesia consisted of a combination of fentanyl (10–20 µg/mL) and morphine (0.4–0.7 mg/mL) at a continuous infusion rate of 0.5 mL/hour (intravenous morphine equivalent dose (IVME) 0.5–1 mg/hour) and a bolus of 1 mL (IVME 1–2 mg) with a lockout interval of 10 min. Generally, when patients tolerated oral nutrition, oral pain medications were initiated. For open thoracotomy, unless contraindicated, a thoracic epidural or paravertebral catheter was placed at approximately T5–T6, and 0.15% ropivacaine and fentanyl (2 µg/mL) were infused at 2–4 mL/hour as tolerated, based on blood pressure and pain scores.

VATS was performed by a three-port technique consisting of three incisions (less than 5 cm) with rib sparing. Posterolateral thoracotomy was performed through the fourth or fifth interspace by making 20 cm incisions, sparing the serratus anterior muscle. The surgical procedure was chosen by the attending thoracic surgeon based on clinical features including patient age, comorbid disease, pulmonary function, and tumor characteristics. Intercostal nerve blockade or percutaneous wound injection using 0.25% bupivacaine was performed before or after the main surgical procedure according to the attending surgeons.

CPSP was defined when the pain intensity measured by an 11-point Numeric Rating Scale (NRS) was higher than 3 points for at least 3 months during the 36 months after surgery.¹³ We used the pain intensity of a surgical site based on the electronic medical records. In the outpatient clinic, patients were asked to rate their current pain intensity along the scar using the 11-point NRS (0: no pain at all, 10: worst imaginable pain) by thoracic surgeons. CPSP was determined as consecutive NRS scores

Table 1 Characteristics and perioperative parameters between patients with and without chronic postsurgical pain after thoracic surgery

	CPSP group	Non-CPSP group	P value*†
Sample size, n	558	2642	
Demographic characteristics			
Age, years	64 (58–70)	64 (56–71)	0.82
Sex			0.09
Male	295 (52.9)	1503 (56.9)	
Female	263 (47.1)	1139 (43.1)	
Body mass index, kg/m ²	23.7 (21.9–25.8)	23.6 (21.6–25.6)	0.32
Current smoker	151 (27.1)	761 (28.8)	0.44
Background medical status			
ASA class I/II/III	160 (28.7)/364 (65.2)/34 (6.1)	752 (28.5)/1749 (66.2)/141 (5.3)	0.76
Diabetes mellitus	82 (14.7)	375 (14.2)	0.81
History of tuberculosis	45 (8.1)	202 (7.6)	0.80
Preoperative analgesic use	24 (4.3)	110 (4.2)	0.98
Preoperative strong opioid use‡	0 (0)	6 (0.2)	0.56
Preoperative antipsychotics use	8 (1.4)	49 (1.9)	0.61
Preoperative chemotherapy	19 (3.4)	84 (3.2)	0.89
Postoperative chemotherapy	196 (35.1)	667 (25.2)	<0.001
Preoperative radiation therapy	12 (2.2)	60 (2.3)	0.99
Postoperative radiation therapy	85 (15.2)	276 (10.4)	<0.01
Previous other surgeries	358 (64.2)	1678 (63.5)	0.81
Surgical characteristics			
Operation year, n			<0.01
2007/2008/2009/2010/2011/2012/2013/2014/2015/2016	45/33/24/38/71/66/66/78/75/62	122/119/141/147/268/331/319/364/394/437	
Operative technique			<0.001
Thoracotomy	193 (34.6)	611 (23.1)	
VATS	365 (65.4)	2031 (76.9)	
Operation type			0.03
Pneumonectomy	16 (2.9)	54 (2.0)	
Lobectomy	471 (84.4)	2117 (80.1)	
Segmentectomy	28 (5.0)	213 (8.1)	
Wedge resection	39 (7.0)	244 (9.2)	
Biopsy	3 (0.5)	13 (0.5)	
Explorative surgery	1 (0.2)	1 (0)	
Operation time, min	160 (130–215)	147 (120–190)	<0.001
Type of anesthesia			0.02
Inhalation agent	187 (33.5)	748 (28.3)	
TIVA	371 (66.5)	1894 (71.7)	
Type of PCA			0.15
Intravenous PCA	426 (76.3)	2065 (78.2)	
Epidural PCA	129 (23.1)	551 (20.9)	
Paravertebral PCA	3 (0.5)	9 (0.3)	
None	0 (0.0)	17 (0.6)	
Other analgesic techniques			
Intercostal nerve blockade	81 (14.5)	493 (18.7)	
Percutaneous wound injection	62 (11.1)	241 (9.1)	
Maximal NRS score during POD 2, 0–10	7 (5–8)	7 (5–8)	0.02
NRS score at first outpatient visit after surgery, 0–10	3 (3–5)	2 (0–3)	<0.001

The values are presented as median (IQR) or number (%).

*P value compares CPSP group versus non-CPSP group.

†Continuous variables were compared using Mann-Whitney U test. Proportions were compared using χ^2 or Fisher's exact test according to their expected counts.

‡Morphine, oxycodone, hydrocodone, hydromorphone, and transdermal fentanyl patch.

ASA, American Society of Anesthesiologists physical status classification; CPSP, chronic postsurgical pain; NRS, Numeric Rating Scale; PCA, patient-controlled analgesia; POD, postoperative day; TIVA, total intravenous anesthesia; VATS, video-assisted thoracic surgery.

≥ 3 in two measurements at least 3 months apart.¹³ ¹⁴ Exceptionally, CPSP at 3 months after surgery was defined using the NRS scores measured at a first outpatient visit and at 3-month follow-up after surgery, where the time interval between the two points was less than 3 months. The first outpatient follow-up was performed approximately 2 weeks after surgery. We classified patients into the following four groups based on their condition at 3-month intervals for 36 months after surgery: newly developed CPSP, continued CPSP, recurrent CPSP, non-CPSP, and lost

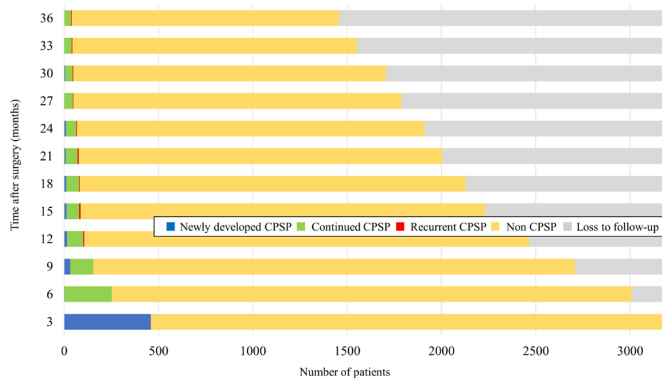


Figure 1 Long-term incidence of chronic postsurgical pain (CPSP) during the first 36 months after thoracic surgery in all cohorts.

to follow-up. The duration of CPSP was calculated at 3-month intervals. In the event of a recurrent CPSP, the summed duration of CPSP within 36 months after surgery was used.

Statistical analysis

R V.3.6.1 (R Foundation for Statistical Computing, Vienna, Austria) was used to analyze the data. A two-sided $p < 0.05$ was considered statistically significant for all analyses. The Shapiro-Wilk test and the quantile-quantile plot were used to determine the normal distribution of continuous variables. Continuous data are reported as mean and SD or median and IQR, and were compared between groups using the independent t-test or Mann-Whitney U test according to the normality of data. Categorical data are described as frequency or percentage and were compared between groups using the χ^2 test or Fisher's exact test according to their expected counts. We compared the groups based on the presence/absence of CPSP (CPSP vs non-CPSP) as well as on the onset of CPSP (delayed-onset CPSP vs acute-onset CPSP). Delayed-onset CPSP was defined when the CPSP was not diagnosed at 3 months after surgery but was later diagnosed. Since a relatively large proportion of patients with missing data were excluded, we also compared these excluded patients with the patients included in the study.

To investigate the association between perioperative parameters and the risk of CPSP, we conducted a Cox proportional hazard regression analysis for chronic postoperative pain during the 36 months after surgery. The proportional hazard assumptions of the Cox regression analysis were tested by visual inspection of log-minus-log survival plots for categorical variables and

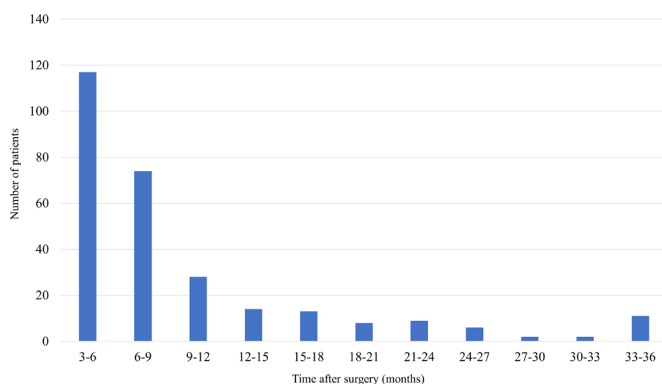


Figure 2 Summed duration of chronic postsurgical pain (CPSP) in patients with CPSP followed up for 36 months after surgery (total, $n=1457$; CPSP, $n=284$).

restricted cubic splines for continuous variables. The following variables were included in the analyses without the variable selection process: age, female sex, preoperative analgesic use, thoracotomy (vs VATS), operation time (hour), NRS score at first outpatient visit after surgery, postoperative chemotherapy, postoperative radiation therapy, and year of surgery. We used the NRS score at a first outpatient visit after surgery instead of the maximal NRS score on postoperative day 2 as a variable representing the intensity of acute postoperative pain. During hospitalization, several ward nurses evaluated the pain intensity on a rotational basis, and the evaluation method was not uniform. We believe that NRS evaluated by surgeons in the outpatient visit can better differentiate the degree of acute postoperative pain. We included the year of surgery due to concerns regarding the recent reduction in the frequency of CPSP. The following variables were not included in the analysis due to the violation of proportional hazard assumptions: current smoker, diabetes mellitus, main anesthetic agents, preoperative antipsychotics use, intraoperative intercostal nerve blockade, and percutaneous wound injection.

RESULTS

Among the 3200 patients in this study, 558 (17.4%, 95% CI 16.2% to 18.8%) were diagnosed with CPSP within 36 months after surgery. Patients' characteristics and perioperative parameters are summarized in table 1. Patients with CPSP were more likely to receive postoperative chemotherapy or radiation therapy, more likely to receive thoracotomy, had a longer duration of surgery, more likely to receive inhalation anesthetic agents during surgery, less likely to receive intraoperative intercostal nerve blockade, and had higher NRS score at the first outpatient visit after surgery. No patients with CPSP had taken any opioid medications before their surgery. The characteristics and perioperative parameters between patients included and excluded in the study due to loss of follow-up or inadequate medical records are presented in online supplementary table S1. The mortality within 36 months after surgery was significantly higher in the excluded group than in the included group ($n=297$, 9.3% vs $n=263$, 31.8%; $p < 0.001$). Among the excluded patients, 57 (6.9%) died within 3 months after surgery.

Figure 1 and online supplementary table S2 show the trend in the status of chronic pain at 3-month intervals during the 36 months after thoracic surgery. Overall, 459 (14.3%, 95% CI 13.2% to 15.6%) patients had CPSP at 3 months after surgery, and 99 (3.1%, 95% CI 2.5% to 3.8%) were additionally diagnosed with CPSP at least 6 months after surgery. Patients' clinical characteristics and perioperative parameters according to the onset of CPSP are presented in online supplementary table S3. The incidence of CPSP tended to decrease over time after surgery. Furthermore, 40 of 1457 (2.7%, 95% CI 2.0% to 3.7%) patients were diagnosed with CPSP at 36 months after surgery. A total of 1457 patients were followed up for 36 months after surgery, of whom 284 were diagnosed with CPSP. The median (IQR) of their summed duration of CPSP was 6 (3–9) months (figure 2). Among them, 26 patients showed improvement in CPSP, followed by relapse. The incidence of CPSP at 3 months after surgery did not show significant differences between the years of surgery ($p=0.38$) (figure 3). During the study period, there were changes in perioperative parameters in our hospital (online supplementary table S4).

Among the 558 patients with CPSP, 475 (85.1%, 95% CI 82.2% to 88.1%) received analgesics for CPSP after surgery (table 2). The most commonly prescribed analgesics were weak

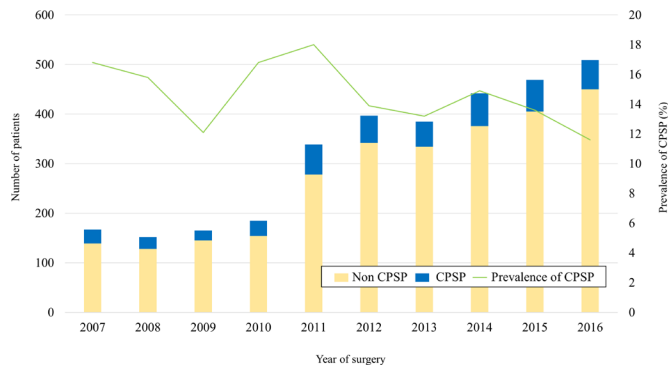


Figure 3 Trend in the incidence of chronic postsurgical pain (CPSP) at 3 months after thoracic surgery according to year of surgery in all cohorts.

opioids such as tramadol or tramadol/acetaminophen combination (81.5%, 95% CI 78.1% to 84.5%). Furthermore, 206 (36.9%, 95% CI 33.5% to 41.5%) patients received strong opioids, and 93 (17.0%, 95% CI 13.6% to 19.8%) received strong opioids for more than 90 days after surgery. Thirty-six (6.5%, 95% CI 4.7% to 8.8%) patients were referred to the pain center of our department for CPSP.

Table 2 Treatments that the patients received for chronic postsurgical pain after thoracic surgery during the study period

Treatments for chronic postsurgical pain	n=558
No medication	83 (14.9)
Acetaminophen	131 (23.5)
Time from surgery to first prescription (months)*	8 (4–18)
Duration of prescription (months)*	0 (0–5)
Anticonvulsants†	71 (12.7)
Time from surgery to first prescription (months)*	8 (3–16)
Duration of prescription (months)*	4 (1–14)
Antidepressants‡	38 (6.8)
Time from surgery to first prescription (months)*	9 (3–21)
Duration of prescription (months)*	6 (0–15)
Lidocaine transdermal patch	24 (4.3)
Time from surgery to first prescription (months)*	7 (3–13)
Duration of prescription (months)*	1 (0–7)
Non-steroidal anti-inflammatory drugs	140 (25.1)
Time from surgery to first prescription (months)*	4 (2–13)
Duration of prescription (months)*	0 (0–4)
Weak opioids§	455 (81.5)
Time from surgery to first prescription (months)*	1 (1–1)
Duration of prescription (months)*	0 (0–1)
Strong opioids¶	206 (36.9)
Time from surgery to first prescription (months)*	4 (1–14)
Duration of prescription (months)*	2 (0–11)
Prolonged strong opioid use (≥3 months)	93 (16.7)
Refer to the pain center	36 (6.5)
Fluoroscopy-guided thoracic epidural block	19 (3.4)
Ultrasound-guided intercostal nerve block	13 (2.8)
10% lidocaine wound injection	5 (0.9)
Pectoral nerve block	2 (0.4)

The values are presented as median (IQR) or number (%).

*The values were rounded to the nearest month. Prescription within 2 weeks is recorded as 0.

†Gabapentin and pregabalin.

‡Tricyclic antidepressants and serotonin-norepinephrine reuptake inhibitors.

§Tramadol and tramadol/acetaminophen combination.

¶Morphine, oxycodone, hydrocodone, hydromorphone, and transdermal fentanyl patch.

Table 3 Cox proportional hazard regression analysis to predict chronic postsurgical pain during the first 36 months after thoracic surgery

	HR (95% CI)	P value*
Age	1.01 (1.00 to 1.02)	0.23
Sex		
Male	Reference	
Female	1.20 (1.00 to 1.43)	0.04
Preoperative analgesic use	1.00 (0.66 to 1.51)	0.99
Operative technique		
VATS	Reference	
Thoracotomy	1.02 (0.82 to 1.28)	0.84
Operation time, hours	1.11 (1.03 to 1.20)	<0.01
NRS score at first outpatient visit after surgery	1.29 (1.25 to 1.34)	<0.001
Postoperative chemotherapy	1.55 (1.26 to 1.90)	<0.001
Postoperative radiation therapy	1.35 (1.05 to 1.74)	0.02
Year of surgery		
2007	Reference	
2008	0.77 (0.49 to 1.22)	0.27
2009	0.65 (0.39 to 1.07)	0.09
2010	1.05 (0.67 to 1.63)	0.84
2011	1.29 (0.87 to 1.90)	0.20
2012	0.92 (0.62 to 1.39)	0.70
2013	0.98 (0.66 to 1.46)	0.92
2014	0.88 (0.59 to 1.30)	0.51
2015	0.94 (0.63 to 1.39)	0.76
2016	1.14 (0.76 to 1.71)	0.52

*Tested by Cox proportional hazards regression.

NRS, Numeric Rating Scale; VATS, video-assisted thoracic surgery.

Table 3 shows the results of the Cox proportional hazard regression analysis for CPSP during the 36 months after surgery. Female sex (HR 1.20, 95% CI 1.00 to 1.43; $p=0.05$), longer surgery duration (HR 1.11, 95% CI 1.03 to 1.20; $p<0.01$), higher NRS score at the first outpatient visit after surgery (HR 1.29, 95% CI 1.24 to 1.34; $p<0.001$), postoperative chemotherapy (HR 1.55, 95% CI 1.26 to 1.90; $p<0.001$), and postoperative radiation therapy (HR 1.35, 95% CI 1.05 to 1.74; $p=0.02$) were significant predictors of CPSP during the first 36 months after surgery. Years of surgery were not significantly associated with CPSP.

DISCUSSION

In this study, we investigated the long-term incidence of CPSP during the first 36 months after thoracic surgery. Our study showed that the overall incidence of CPSP within 36 months after thoracic surgery was 17.4%. Most CPSP were a continuation of acute postoperative pain after thoracic surgery, and the incidence of CPSP decreased over time after surgery. In Cox proportional hazard regression analyses, female sex, longer duration of surgery, higher NRS score at the first outpatient visit after surgery, postoperative chemotherapy, and postoperative radiation therapy were significant risk factors of CPSP.

In this study, the overall incidence of CPSP during the 36 months after surgery was 17.4%, and the sequential incidence of CPSP showed a declining trend with time. The incidence of CPSP at postoperative 3 months was lower than that reported in most previously published studies; however, it is similar to that reported in recent retrospective multicenter study conducted in Japan.¹⁵ Only few studies have reported the long-term incidence

of CPSP after thoracic surgery. One retrospective study reported that the incidence of CPSP at 7–12 months after thoracic surgery was 57%, then declined to 21% at 6–7 years after surgery.¹⁶ Another retrospective study reported a decreasing trend in the incidence of CPSP during the first 27 months after surgery.¹⁷ However, these studies did not investigate the serial course of CPSP in the same patient; therefore, delayed-onset or recurrent CPSP could not be described.

In our study, patients with CPSP had various recovery rates after surgery. Most CPSP continued from acute postoperative pain after surgery, but some developed after the asymptomatic period after surgery. This phenomenon has not been previously reported in patients treated by thoracic surgery but has been reported in patients with breast cancer.¹⁸ The delayed onset of pain after injury may be associated with slow anatomical, physiological, and biochemical changes,¹⁹ but the mechanism of this phenomenon remains unidentified.

Our study showed the various durations of CPSP, most of which were less than 9 months. The time concept of ‘more than 3 months’ used in the definition of CPSP is based on the assumption that the duration of normal tissue healing is 3 months. However, this time concept is arbitrary, and the duration of tissue healing may vary depending on multiple systemic and local factors.²⁰ Various patient-related, surgery-related, and anesthesia-related factors affect the development and maintenance of CPSP.^{3–4} Further, postoperative factors such as adjuvant therapy can also affect CPSP. This complexity may lead to a wide variety of clinical prognoses. Our study revealed that most CPSP were eventually resolved, but in some patients it persisted or recurred during the study period. Future research should consider the duration of CPSP and focus more on patients with long-term CPSP.

Our findings cast doubt on the necessity for strong opioid prescription in most patients with CPSP after thoracic surgery. Previously, opioids played a pivotal role in postoperative pain management.²¹ However, postsurgical opioid use can lead to prolonged opioid use, which can have a detrimental effect on patient prognosis.^{6–12–22–23} Thoracic surgery is associated with a higher risk of postoperative prolonged opioid use compared with other major surgeries.¹² The prescription rate of strong opioids in patients with CPSP in our study was lower than those reported in other countries.^{12–22} This result reflects differences in the opioid prescription pattern between countries as well as the surgical and perioperative management.²⁴ Despite the low prescription rate of strong opioids, the rapid decline of CPSP incidence after surgery raises questions about their role in the treatment of CPSP. The prescription of strong opioids in most patients with CPSP after thoracic surgery may not be necessary. Considering the median duration of CPSP in our study, if opioids are required, physicians should prescribe opioids for only a limited period and plan for dose tapering or discontinuation at the time of the first prescription. Further studies on the benefits and risk of long-term opioids use as well as proper indication of opioids in patients with CPSP are required.

Since we considered CPSP as a time-to-event measurement, we conducted a Cox proportional hazard regression analysis rather than a binary logistic regression analysis to investigate the risk factors of CPSP. Our findings also revealed multiple risk factors, including female sex, longer duration of surgery, and higher severity of acute postoperative pain, which were associated with the development of CPSP. These results were consistent with previously published, known risk factors for CPSP.^{5–25} Although our study did not show thoracotomy as a significant risk factor for CPSP compared with VATS, there has been debate

about the protective effect of VATS on the development of CPSP.^{8–14–26} In addition, we identified a statistically significant relationship between postoperative chemotherapy or radiation therapy and the incidence of CPSP. Although several studies have suggested that adjuvant radiotherapy or chemotherapy can increase the risk of CPSP after breast surgery,^{18–27} the association between these therapies and CPSP after thoracic surgery has, to the best of our knowledge, not been reported. The neuropathic component accounts for a large portion of CPSP in thoracic and breast surgeries.²⁸ Considering that radiation-induced or chemotherapy-induced neuropathies are well-known complications in patients with cancer,¹¹ these adjuvant therapies could act as contributing factors to nerve injury associated with CPSP. However, these therapies were not found to be significant risk factors for CPSP in a recent prospective study.⁸ Further studies regarding how possible contributing factors to nerve injury affect the CPSP after thoracic surgery, which can be called ‘double crush syndrome’, are required. Although not all the risk factors showed statistically significant association with CPSP, we believe that the efforts of our physician over the past decade, such as the introduction of minimally invasive surgery, decrease of postoperative adjuvant therapies due to early diagnosis, and shorter operation time, have led to a recent decline in the incidence of CPSP.

The results of our study should be interpreted cautiously for several reasons. First, we could not include some potential predictors of CPSP because of the retrospective design of this study. We did not have detailed information regarding pre-existing pain conditions, psychological status, and prolonged chest tube drainage, which are known predictors of CPSP.^{4–17} Additionally, the genetic predisposition for chronic pain that we did not consider could also affect the occurrence of CPSP. Second, we investigated only the pain intensity of a surgical site as evaluated by NRS. Thoracic surgery can result in not only pain of a surgical site but also pain beyond the surgical site, and even other symptoms such as numbness and paresthesia. Furthermore, a large proportion of patients were excluded due to loss of follow-up or inadequate medical records. These excluded patients most likely had risk factors for CPSP reported in our study or previously published studies. We speculate that these limitations may have underestimated the incidence of CPSP in our study. However, the number of patients excluded from our study was not higher than those who declined to participate or were excluded for no clear reason in previous prospective studies.^{8–14–29} Unlike other studies, we have tried to provide more detailed information by analyzing the characteristics of the excluded patients. Third, we could not investigate the effects of CPSP on functional disability or quality of life of patients. The impact on the quality of life of each patient can vary, even with similar severities of pain. Fourth, the number of patients lost to follow-up increased over time after surgery. Therefore, it was not possible to calculate the exact incidence of CPSP beyond 3 months after surgery. Last, there was no information regarding the treatment for CPSP received at other hospitals. However, more than 80% of opioid analgesics were prescribed at general or tertiary hospitals in Korea.³⁰ Therefore, we hypothesized that a few patients might have been prescribed opioid analgesics at other hospitals.

CONCLUSIONS

In conclusion, our study showed various time courses of CPSP after thoracic surgery and a decreasing trend over time. A better understanding of the long-term course of CPSP may provide important information on its prediction and treatment. In

addition, future studies should consider CPSP as a time-to-event measurement and focus on the progression of CPSP rather than its point prevalence.

Acknowledgements We would like to thank Editage (www.editage.co.kr) for English language editing.

Contributors SY: data collection, statistical analysis, manuscript preparation. W-PH: data collection, manuscript revision. HJ: data collection. HK: data collection, manuscript revision. SP: manuscript revision. J-HB: manuscript revision. HJL: study design, statistical analysis, manuscript preparation, manuscript revision.

Funding The authors have not declared a specific grant for this research from any funding agency in the public, commercial or not-for-profit sectors.

Competing interests None declared.

Patient consent for publication Not required.

Ethics approval The institutional review board (IRB) of Seoul National University Hospital approved this retrospective cohort study (IRB no 2001-005-1090). All methods were carried out in accordance with the approved guidelines.

Provenance and peer review Not commissioned; externally peer reviewed.

Data availability statement Data are available upon reasonable request. Deidentified participant data are available upon reasonable request.

ORCID iD

Ho-Jin Lee <http://orcid.org/0000-0002-7134-5044>

REFERENCES

- Werner MU, Kongsgaard UE. I. defining persistent post-surgical pain: is an update required? *Br J Anaesth* 2014;113:1–4.
- Thapa P, Euasobhon P. Chronic postsurgical pain: current evidence for prevention and management. *Korean J Pain* 2018;31:155–73.
- Glare P, Aubrey KR, Myles PS. Transition from acute to chronic pain after surgery. *Lancet* 2019;393:1537–46.
- Kehlet H, Jensen TS, Woolf CJ. Persistent postsurgical pain: risk factors and prevention. *Lancet* 2006;367:1618–25.
- Gan TJ. Poorly controlled postoperative pain: prevalence, consequences, and prevention. *J Pain Res* 2017;10:2287–98.
- Brummett CM, Waljee JF, Goesling J, et al. New persistent opioid use after minor and major surgical procedures in US adults. *JAMA Surg* 2017;152:e170504.
- Bayman EO, Brennan TJ. Incidence and severity of chronic pain at 3 and 6 months after thoracotomy: meta-analysis. *J Pain* 2014;15:887–97.
- Bayman EO, Parekh KR, Keech J, et al. A prospective study of chronic pain after thoracic surgery. *Anesthesiology* 2017;126:938–51.
- Petersen RH, Hansen HJ, Dirksen A, et al. Lung cancer screening and video-assisted thoracic surgery. *J Thorac Oncol* 2012;7:1026–31.
- National Lung Screening Trial Research Team, Aberle DR, Adams AM, et al. Reduced lung-cancer mortality with low-dose computed tomographic screening. *N Engl J Med* 2011;365:395–409.
- Brown MR, Ramirez JD, Farquhar-Smith P. Pain in cancer survivors. *Br J Pain* 2014;8:139–53.
- Clarke H, Soneji N, Ko DT, et al. Rates and risk factors for prolonged opioid use after major surgery: population based cohort study. *BMJ* 2014;348:g1251.
- Fletcher D, Stamer UM, Pogatzki-Zahn E, et al. Chronic postsurgical pain in Europe: an observational study. *Eur J Anaesthesiol* 2015;32:725–34.
- Bendixen M, Jørgensen OD, Kronborg C, et al. Postoperative pain and quality of life after lobectomy via video-assisted thoracoscopic surgery or anterolateral thoracotomy for early stage lung cancer: a randomised controlled trial. *Lancet Oncol* 2016;17:836–44.
- Sugiyama Y, Iida H, Amaya F, et al. Prevalence of chronic postsurgical pain after thoracotomy and total knee arthroplasty: a retrospective multicenter study in Japan (Japanese Study group of subacute postoperative pain). *J Anesth* 2018;32:434–8.
- Maguire MF, Ravenscroft A, Beggs D, et al. A questionnaire study investigating the prevalence of the neuropathic component of chronic pain after thoracic surgery. *Eur J Cardiothorac Surg* 2006;29:800–5.
- Peng Z, Li H, Zhang C, et al. A retrospective study of chronic post-surgical pain following thoracic surgery: prevalence, risk factors, incidence of neuropathic component, and impact on quality of life. *PLoS One* 2014;9:e90014.
- Mejdahl MK, Andersen KG, Gärtner R, et al. Persistent pain and sensory disturbances after treatment for breast cancer: six year nationwide follow-up study. *BMJ* 2013;346:f1865.
- Schott GD. Delayed onset and resolution of pain: some observations and implications. *Brain* 2001;124:1067–76.
- Velnar T, Bailey T, Smrkolj V. The wound healing process: an overview of the cellular and molecular mechanisms. *J Int Med Res* 2009;37:1528–42.
- Strassels SA, McNicol E, Suleman R. Postoperative pain management: a practical review, part 2. *Am J Health Syst Pharm* 2005;62:2019–25.
- Brat GA, Agniel D, Beam A, et al. Postsurgical prescriptions for opioid naive patients and association with overdose and misuse: retrospective cohort study. *BMJ* 2018;360:j5790.
- Oh TK, Jeon Y-T, Choi JW. Trends in chronic opioid use and association with five-year survival in South Korea: a population-based cohort study. *Br J Anaesth* 2019;123:655–63.
- Berterame S, Erthal J, Thomas J, et al. Use of and barriers to access to opioid analgesics: a worldwide, regional, and national study. *Lancet* 2016;387:1644–56.
- Reddi D. Preventing chronic postoperative pain. *Anaesthesia* 2016;71:64–71.
- Rizk NP, Ghanie A, Hsu M, et al. A prospective trial comparing pain and quality of life measures after anatomic lung resection using thoracoscopy or thoracotomy. *Ann Thorac Surg* 2014;98:1160–6.
- Roth RS, Qi J, Hamill JB, et al. Is chronic postsurgical pain surgery-induced? A study of persistent postoperative pain following breast reconstruction. *Breast* 2018;37:119–25.
- Haroutiunian S, Nikolajsen L, Finnerup NB, et al. The neuropathic component in persistent postsurgical pain: a systematic literature review. *Pain* 2013;154:95–102.
- Wildgaard K, Ringsted TK, Hansen HJ, et al. Persistent postsurgical pain after video-assisted thoracic surgery—an observational study. *Acta Anaesthesiol Scand* 2016;60:650–8.
- Choi H, Lee E. Market analysis of narcotic analgesics in Korea using HIRA claims data. *J Korean Acad Manag Care Pharm* 2015;4:31–7.

Long-term incidence of chronic postsurgical pain after thoracic surgery for lung cancer: A 10-year single-center retrospective study

Susie Yoon, MD^{1,2}, Won-Pyo Hong, MD¹, Hyundeok Joo³, Hansol Kim¹, Samina Park, MD^{4,5}, Jae-Hyon Bahk MD, PhD^{1,2}, and Ho-Jin Lee, MD^{1,2}

¹ Department of Anesthesiology and Pain Medicine, Seoul National University Hospital, Seoul, Republic of Korea

² Department of Anesthesiology and Pain Medicine, Seoul National University College of Medicine, Seoul, Republic of Korea

³ Medical student, Seoul National University College of Medicine, Seoul, Republic of Korea

⁴ Department of Thoracic and Cardiovascular Surgery, Seoul National University Hospital, Seoul, Republic of Korea

⁵ Department of Thoracic and Cardiovascular Surgery, Seoul National University College of Medicine, Seoul, Republic of Korea

Number	Title	Page
Supplemental Table S1.	Supplemental Table S1. Patient characteristics and perioperative parameters between patients included and excluded in the study due to missing data.	3,4
Supplemental Table S2.	The trend for the incidence of chronic postsurgical pain (CPSP) during the first 36 months after thoracic surgery.	5
Supplemental Table S3.	Patient characteristics and perioperative parameters between patients with chronic postsurgical pain (CPSP) continued from acute	6,7

	postoperative pain (acute-onset CPSP) and with delayed-onset CPSP after the asymptomatic period after surgery (delayed-onset CPSP).	
Supplemental Table S4	Surgical and anesthesia related parameters according to the year of surgery.	8,9

Supplemental Table S1. Patient characteristics and perioperative parameters between patients included and excluded in the study due to missing data.

	Patients included in the study	Patients excluded in the study ^a	P-value ^{b,c}
Sample size, n	3200	827	
Demographic characteristics			
Age, years	64 (56–71)	65 (56–72)	0.38
Sex, n			0.02
Male	1798 (56.2)	502 (60.7)	
Female	1402 (43.8)	325 (39.3)	
Body-mass index, kg/m ²	23.6 (21.6–25.6)	23.1 (21.0–25.2)	<0.001
Current smoker, n	912 (28.5)	226 (27.3)	0.53
Background medical status, n			
ASA class I/II/III	912 (28.5)/2113 (66.0)/175 (5.5)	241 (29.1)/525 (63.5)/61 (7.4)	0.09
Diabetes mellitus	457 (14.3)	141 (17.0)	0.05
History of tuberculosis	247 (7.7)	71 (8.6)	0.45
Chronic analgesic use	134 (4.2)	52 (6.3)	0.01
Chronic opioid use	6 (0.2)	10 (1.2)	<0.001
Antipsychotics use	57 (1.8)	11 (1.3)	0.81
Preoperative chemotherapy	103 (3.2)	55 (6.7)	<0.001
Postoperative chemotherapy	863 (27.0)	274 (33.1)	<0.01
Preoperative radiation therapy	72 (2.2)	36 (4.4)	<0.01
Postoperative radiation therapy	361 (11.3)	101 (12.2)	0.49
Previous other surgeries	2036 (63.6)	511 (61.8)	0.35
Surgical characteristics			

Operation year, n			<0.001
2007/2008/2009/2010/2011/ 2012/2013/2014/2015/2016	167/152/165/185/339/ 397/385/442/469/499	77/85/95/79/65/ 84/78/38/106/120	
Operative technique, n			<0.001
Thoracotomy	804 (25.1)	328 (39.7)	
VATS	2396 (74.9)	499 (60.3)	
Operation type, n			<0.001
Pneumonectomy	70 (2.2)	33 (4.0)	
Lobectomy	2588 (80.9)	552 (66.7)	
Segmentectomy	241 (7.5)	31 (3.7)	
Wedge resection	283 (8.8)	158 (19.1)	
Biopsy	16 (0.5)	45 (5.4)	
Pleurodesis	0 (0)	6 (0.7)	
Combined aortic surgery	0 (0)	2 (0.2)	
Explorative surgery	2 (0.1)	0 (0)	
Operation time, min	150 (120–195)	145 (100–200)	<0.001
Maximal NRS during POD 2, 0- 10	7 (5–8)	7 (5–8)	0.06
All-cause death within 36 months after surgery	297 (9.3)	263 (31.8)	<0.001

The values are presented as the median (interquartile range) or number (%).

Abbreviations: ASA, American Society of Anesthesiologist physical status classification; VATS, Video-assisted thoracic surgery; NRS, numeric rating scale; POD, postoperative day

a: Patients with history of previous thoracic surgery, those who underwent re-operation at the ipsilateral site during the study period, and treated with surgical methods other than VATS and thoracotomy were not included in this group.

b: P-value compares the patients included in the study and excluded in the study due to missing data.

c: Continuous variables were compared using the Mann-Whitney U test. Proportions were compared using the Chi-squared or Fisher's exact test according to their expected counts.

Supplemental Table S2. The trend for the incidence of chronic postsurgical pain during the first 36 months after thoracic surgery.

Time (months) after surgery	Continued CPSP	Recurrent CPSP	Newly developed CPSP	Non-CPSP	Loss to follow-up ^a	All-cause death
3	-	-	459 (14.3)	2741 (85.7)	-	-
6	249 (7.8)	-	3 (0.1)	2756 (86.1)	192 (6.0)	9 (0.3)
9	121 (3.8)	-	32 (1.0)	2555 (79.8)	493 (15.4)	33 (1.0)
12	87 (2.7)	5 (0.2)	14 (0.4)	2358 (73.7)	736 (23.0)	56 (1.8)
15	67 (2.1)	7 (0.2)	12 (0.4)	2145 (67.0)	969 (30.3)	87 (2.7)
18	68 (2.1)	4 (0.1)	11 (0.3)	2045 (63.9)	1072 (33.5)	119 (3.7)
21	63 (2.0)	6 (0.2)	8 (0.3)	1927 (60.2)	1196 (37.4)	146 (4.6)
24	54 (1.7)	4 (0.1)	9 (0.3)	1844 (57.6)	1289 (40.3)	181 (5.7)
27	44 (1.4)	2 (0.1)	2 (0.1)	1739 (54.3)	1413 (44.2)	210 (6.6)
30	39 (1.2)	3 (0.1)	5 (0.2)	1659 (51.8)	1494 (46.7)	238 (7.4)
33	38 (1.2)	3 (0.1)	2 (0.1)	1508 (47.1)	1649 (51.5)	259 (8.1)
36	35 (1.1)	4 (0.1)	1 (0.0)	1417 (44.3)	1743 (54.5)	297 (9.3)

The values are presented as the number (%).

Abbreviations: CPSP, chronic postsurgical pain

^aThis value includes all-cause death.

Supplemental Table S3. Patient characteristics and perioperative parameters between patients with chronic postsurgical pain (CPSP) continued from acute postoperative pain (acute-onset CPSP) and with delayed-onset CPSP after the asymptomatic period after surgery (delayed-onset CPSP).

	Acute-onset CPSP	Delayed-onset CPSP	P-value ^{a,b}
Sample size, n	459	99	
Demographic characteristics			
Age, years	64 (58–70)	65 (58–69)	0.97
Sex, n			0.53
Male	246 (53.6)	49 (49.5)	
Female	213 (46.4)	50 (50.5)	
Body-mass index, kg/m ²	23.6 (21.9–25.8)	24.1 (21.9–25.9)	0.69
Current smoker, n	124 (27.0)	27 (27.3)	>0.99
Background medical status, n			
ASA class I/II/III	128 (27.9)/303 (66.0)/28 (6.1)	32 (32.3)/61 (61.6)/6 (6.1)	0.67
Diabetes mellitus	65 (14.2)	17 (17.2)	0.54
History of tuberculosis	45 (8.1)	202 (7.6)	0.80
Chronic analgesic use	21 (4.6)	3 (3.0)	0.78
Preoperative chemotherapy	14 (3.1)	5 (5.1)	0.36
Postoperative chemotherapy	155 (33.8)	41 (41.4)	0.18
Preoperative radiation therapy	10 (2.2)	2 (2.0)	>0.99
Postoperative radiation therapy	65 (14.2)	20 (20.2)	0.17
Previous other surgeries	294 (64.1)	64 (64.6)	>0.99
Surgical characteristics			
Operative technique, n			0.32
Thoracotomy	154 (33.6)	39 (39.4)	
VATS	305 (66.4)	60 (60.6)	

Operation type, n			0.28
Pneumonectomy	15 (3.3)	1 (1.0)	
Lobectomy	379 (82.6)	92 (92.9)	
Segmentectomy	26 (5.7)	2 (2.0)	
Wedge resection	35 (7.6)	4 (4.0)	
Biopsy	3 (0.7)	0 (0)	
Explorative surgery	1 (0.2)	0 (0)	
Operation time, min	160 (130–215)	175 (135–223)	0.40
Type of anesthesia, n			<0.01
Inhalation agent	141 (30.7)	46 (46.5)	
TIVA	318 (69.3)	53 (53.5)	
Intraoperative bupivacaine use, n	123 (26.8)	20 (20.2)	0.22
Type of PCA, n			0.78
Intravenous PCA	352 (76.7)	74 (74.7)	
Epidural PCA	104 (22.7)	25 (25.3)	
Paravertebral PCA	3 (0.7)	0 (0)	
Maximal NRS during POD 2, 0-10	7 (5–8)	7 (6–8)	0.41
NRS at first outpatient visit after surgery, 0-10	4 (3–5)	3 (2–5)	<0.001

The values are presented as the median (interquartile range) or number (%).

Abbreviations: CPSP, chronic postsurgical pain; ASA, American Society of Anesthesiologist physical status classification; VATS, Video-assisted thoracic surgery; TIVA, total intravenous anesthesia; PCA, patient controlled analgesia; NRS, numeric rating scale; POD, postoperative day

a: P-value compares CPSP group versus non-CPSP group, b: Mann-Whitney U test used to compare medians and chi-square test or Fisher's exact test used to compare proportions

Supplemental Table S4. Surgical and anesthesia related parameters according to the year of surgery.

Variable	2007 (n=167)	2008 (n=152)	2009 (n=165)	2010 (n=185)	2011 (n=339)
Female, n	55 (32.9)	76 (50.0)	65 (39.4)	79 (42.7)	164 (48.4)
Age, years	65 (58–71)	62 (55–68)	66 (58–71)	64 (57–69)	63 (56–69)
Thoracotomy (vs. VATS), n	113 (67.7)	90 (59.2)	76 (46.1)	64 (34.6)	80 (23.6)
Operation time, min	185 (145–230)	170 (140–220)	170 (135–225)	179 (145–220)	155 (125–200)
Inhalational anesthesia (vs. TIVA), n	167 (100)	152 (100)	165 (100)	185 (100)	219 (64.6)
Epidural PCA (vs. Intravenous PCA), n	95 (56.9)	69 (45.4)	78 (47.3)	53 (28.6)	85 (25.1)
Maximal NRS during POD 2, 0–10	7 (5–8)	5 (4–7)	6 (5–7)	7 (5–8)	7 (5–8)
NRS at first outpatient visit after surgery, 0–10	2 (0–5)	2 (0–5)	2 (0–4)	3 (0–4)	3 (1–3)
Postoperative chemotherapy, n	80 (47.9)	56 (36.8)	50 (30.3)	59 (31.9)	108 (31.9)
Postoperative radiation therapy, n	28 (16.8)	24 (15.8)	30 (18.2)	27 (14.6)	55 (16.2)
Variable	2012 (n=397)	2013 (n=385)	2014 (n=442)	2015 (n=469)	2016 (n=499)
Female, n	184 (46.3)	157 (40.8)	184 (41.6)	214 (45.6)	224 (44.9)
Age, years	63 (56–70)	64 (55–71)	64 (57–71)	65 (58–72)	64 (57–71)
Thoracotomy (vs. VATS), n	63 (15.9)	82 (21.3)	79 (17.9)	73 (15.6)	84 (16.8)

Operation time, min	140 (115–175)	153 (125–205)	156 (130–200)	136 (110–170)	130 (109–165)
Inhalational anesthesia (vs. TIVA), n	5 (1.3)	0 (0)	41 (9.3)	0 (0)	1 (0.2)
Epidural PCA (vs. Intravenous PCA), n	52 (13.1)	74 (19.2)	62 (14.0)	51 (10.9)	61 (12.2)
Maximal NRS during POD 2, 0–10	7 (6–9)	7 (5–8)	7 (6–8)	7 (5–8)	6 (5–8)
NRS at first outpatient visit after surgery, 0–10	3 (1–3)	2 (0–3)	2 (0–4)	2 (0–3)	2 (0–3)
Postoperative chemotherapy, n	94 (23.7)	104 (27.0)	100 (22.6)	96 (20.5)	116 (23.2)
Postoperative radiation therapy, n	39 (9.8)	53 (13.8)	45 (10.2)	28 (6.0)	32 (6.4)

The values are presented as the median (interquartile range) or number (%)

Abbreviations: VATS, Video-assisted thoracic surgery; TIVA, total intravenous anesthesia; PCA, patient controlled analgesia; NRS, numeric rating scale; POD, postoperative day

Long-term incidence of chronic postsurgical pain after thoracic surgery for lung cancer: A 10-year single-center retrospective study

Susie Yoon, MD^{1,2}, Won-Pyo Hong, MD¹, Hyundeok Joo³, Hansol Kim¹, Samina Park, MD^{4,5}, Jae-Hyon Bahk MD, PhD^{1,2}, and Ho-Jin Lee, MD^{1,2}

¹ Department of Anesthesiology and Pain Medicine, Seoul National University Hospital, Seoul, Republic of Korea

² Department of Anesthesiology and Pain Medicine, Seoul National University College of Medicine, Seoul, Republic of Korea

³ Medical student, Seoul National University College of Medicine, Seoul, Republic of Korea

⁴ Department of Thoracic and Cardiovascular Surgery, Seoul National University Hospital, Seoul, Republic of Korea

⁵ Department of Thoracic and Cardiovascular Surgery, Seoul National University College of Medicine, Seoul, Republic of Korea

Number	Title	Page
Supplemental Table S1.	Supplemental Table S1. Patient characteristics and perioperative parameters between patients included and excluded in the study due to missing data.	3,4
Supplemental Table S2.	The trend for the incidence of chronic postsurgical pain (CPSP) during the first 36 months after thoracic surgery.	5
Supplemental Table S3.	Patient characteristics and perioperative parameters between patients with chronic postsurgical pain (CPSP) continued from acute	6,7

	postoperative pain (acute-onset CPSP) and with delayed-onset CPSP after the asymptomatic period after surgery (delayed-onset CPSP).	
Supplemental Table S4	Surgical and anesthesia related parameters according to the year of surgery.	8,9

Supplemental Table S1. Patient characteristics and perioperative parameters between patients included and excluded in the study due to missing data.

	Patients included in the study	Patients excluded in the study ^a	P-value ^{b,c}
Sample size, n	3200	827	
Demographic characteristics			
Age, years	64 (56–71)	65 (56–72)	0.38
Sex, n			0.02
Male	1798 (56.2)	502 (60.7)	
Female	1402 (43.8)	325 (39.3)	
Body-mass index, kg/m ²	23.6 (21.6–25.6)	23.1 (21.0–25.2)	<0.001
Current smoker, n	912 (28.5)	226 (27.3)	0.53
Background medical status, n			
ASA class I/II/III	912 (28.5)/2113 (66.0)/175 (5.5)	241 (29.1)/525 (63.5)/61 (7.4)	0.09
Diabetes mellitus	457 (14.3)	141 (17.0)	0.05
History of tuberculosis	247 (7.7)	71 (8.6)	0.45
Chronic analgesic use	134 (4.2)	52 (6.3)	0.01
Chronic opioid use	6 (0.2)	10 (1.2)	<0.001
Antipsychotics use	57 (1.8)	11 (1.3)	0.81
Preoperative chemotherapy	103 (3.2)	55 (6.7)	<0.001
Postoperative chemotherapy	863 (27.0)	274 (33.1)	<0.01
Preoperative radiation therapy	72 (2.2)	36 (4.4)	<0.01
Postoperative radiation therapy	361 (11.3)	101 (12.2)	0.49
Previous other surgeries	2036 (63.6)	511 (61.8)	0.35
Surgical characteristics			

Operation year, n			<0.001
2007/2008/2009/2010/2011/ 2012/2013/2014/2015/2016	167/152/165/185/339/ 397/385/442/469/499	77/85/95/79/65/ 84/78/38/106/120	
Operative technique, n			<0.001
Thoracotomy	804 (25.1)	328 (39.7)	
VATS	2396 (74.9)	499 (60.3)	
Operation type, n			<0.001
Pneumonectomy	70 (2.2)	33 (4.0)	
Lobectomy	2588 (80.9)	552 (66.7)	
Segmentectomy	241 (7.5)	31 (3.7)	
Wedge resection	283 (8.8)	158 (19.1)	
Biopsy	16 (0.5)	45 (5.4)	
Pleurodesis	0 (0)	6 (0.7)	
Combined aortic surgery	0 (0)	2 (0.2)	
Explorative surgery	2 (0.1)	0 (0)	
Operation time, min	150 (120–195)	145 (100–200)	<0.001
Maximal NRS during POD 2, 0- 10	7 (5–8)	7 (5–8)	0.06
All-cause death within 36 months after surgery	297 (9.3)	263 (31.8)	<0.001

The values are presented as the median (interquartile range) or number (%).

Abbreviations: ASA, American Society of Anesthesiologist physical status classification; VATS, Video-assisted thoracic surgery; NRS, numeric rating scale; POD, postoperative day

a: Patients with history of previous thoracic surgery, those who underwent re-operation at the ipsilateral site during the study period, and treated with surgical methods other than VATS and thoracotomy were not included in this group.

b: P-value compares the patients included in the study and excluded in the study due to missing data.

c: Continuous variables were compared using the Mann-Whitney U test. Proportions were compared using the Chi-squared or Fisher's exact test according to their expected counts.

Supplemental Table S2. The trend for the incidence of chronic postsurgical pain during the first 36 months after thoracic surgery.

Time (months) after surgery	Continued CPSP	Recurrent CPSP	Newly developed CPSP	Non-CPSP	Loss to follow-up ^a	All-cause death
3	-	-	459 (14.3)	2741 (85.7)	-	-
6	249 (7.8)	-	3 (0.1)	2756 (86.1)	192 (6.0)	9 (0.3)
9	121 (3.8)	-	32 (1.0)	2555 (79.8)	493 (15.4)	33 (1.0)
12	87 (2.7)	5 (0.2)	14 (0.4)	2358 (73.7)	736 (23.0)	56 (1.8)
15	67 (2.1)	7 (0.2)	12 (0.4)	2145 (67.0)	969 (30.3)	87 (2.7)
18	68 (2.1)	4 (0.1)	11 (0.3)	2045 (63.9)	1072 (33.5)	119 (3.7)
21	63 (2.0)	6 (0.2)	8 (0.3)	1927 (60.2)	1196 (37.4)	146 (4.6)
24	54 (1.7)	4 (0.1)	9 (0.3)	1844 (57.6)	1289 (40.3)	181 (5.7)
27	44 (1.4)	2 (0.1)	2 (0.1)	1739 (54.3)	1413 (44.2)	210 (6.6)
30	39 (1.2)	3 (0.1)	5 (0.2)	1659 (51.8)	1494 (46.7)	238 (7.4)
33	38 (1.2)	3 (0.1)	2 (0.1)	1508 (47.1)	1649 (51.5)	259 (8.1)
36	35 (1.1)	4 (0.1)	1 (0.0)	1417 (44.3)	1743 (54.5)	297 (9.3)

The values are presented as the number (%).

Abbreviations: CPSP, chronic postsurgical pain

^aThis value includes all-cause death.

Supplemental Table S3. Patient characteristics and perioperative parameters between patients with chronic postsurgical pain (CPSP) continued from acute postoperative pain (acute-onset CPSP) and with delayed-onset CPSP after the asymptomatic period after surgery (delayed-onset CPSP).

	Acute-onset CPSP	Delayed-onset CPSP	P-value ^{a,b}
Sample size, n	459	99	
Demographic characteristics			
Age, years	64 (58–70)	65 (58–69)	0.97
Sex, n			0.53
Male	246 (53.6)	49 (49.5)	
Female	213 (46.4)	50 (50.5)	
Body-mass index, kg/m ²	23.6 (21.9–25.8)	24.1 (21.9–25.9)	0.69
Current smoker, n	124 (27.0)	27 (27.3)	>0.99
Background medical status, n			
ASA class I/II/III	128 (27.9)/303 (66.0)/28 (6.1)	32 (32.3)/61 (61.6)/6 (6.1)	0.67
Diabetes mellitus	65 (14.2)	17 (17.2)	0.54
History of tuberculosis	45 (8.1)	202 (7.6)	0.80
Chronic analgesic use	21 (4.6)	3 (3.0)	0.78
Preoperative chemotherapy	14 (3.1)	5 (5.1)	0.36
Postoperative chemotherapy	155 (33.8)	41 (41.4)	0.18
Preoperative radiation therapy	10 (2.2)	2 (2.0)	>0.99
Postoperative radiation therapy	65 (14.2)	20 (20.2)	0.17
Previous other surgeries	294 (64.1)	64 (64.6)	>0.99
Surgical characteristics			
Operative technique, n			0.32
Thoracotomy	154 (33.6)	39 (39.4)	
VATS	305 (66.4)	60 (60.6)	

Operation type, n			0.28
Pneumonectomy	15 (3.3)	1 (1.0)	
Lobectomy	379 (82.6)	92 (92.9)	
Segmentectomy	26 (5.7)	2 (2.0)	
Wedge resection	35 (7.6)	4 (4.0)	
Biopsy	3 (0.7)	0 (0)	
Explorative surgery	1 (0.2)	0 (0)	
Operation time, min	160 (130–215)	175 (135–223)	0.40
Type of anesthesia, n			<0.01
Inhalation agent	141 (30.7)	46 (46.5)	
TIVA	318 (69.3)	53 (53.5)	
Intraoperative bupivacaine use, n	123 (26.8)	20 (20.2)	0.22
Type of PCA, n			0.78
Intravenous PCA	352 (76.7)	74 (74.7)	
Epidural PCA	104 (22.7)	25 (25.3)	
Paravertebral PCA	3 (0.7)	0 (0)	
Maximal NRS during POD 2, 0-10	7 (5–8)	7 (6–8)	0.41
NRS at first outpatient visit after surgery, 0-10	4 (3–5)	3 (2–5)	<0.001

The values are presented as the median (interquartile range) or number (%).

Abbreviations: CPSP, chronic postsurgical pain; ASA, American Society of Anesthesiologist physical status classification; VATS, Video-assisted thoracic surgery; TIVA, total intravenous anesthesia; PCA, patient controlled analgesia; NRS, numeric rating scale; POD, postoperative day

a: P-value compares CPSP group versus non-CPSP group, b: Mann-Whitney U test used to compare medians and chi-square test or Fisher's exact test used to compare proportions

Supplemental Table S4. Surgical and anesthesia related parameters according to the year of surgery.

Variable	2007 (n=167)	2008 (n=152)	2009 (n=165)	2010 (n=185)	2011 (n=339)
Female, n	55 (32.9)	76 (50.0)	65 (39.4)	79 (42.7)	164 (48.4)
Age, years	65 (58–71)	62 (55–68)	66 (58–71)	64 (57–69)	63 (56–69)
Thoracotomy (vs. VATS), n	113 (67.7)	90 (59.2)	76 (46.1)	64 (34.6)	80 (23.6)
Operation time, min	185 (145–230)	170 (140–220)	170 (135–225)	179 (145–220)	155 (125–200)
Inhalational anesthesia (vs. TIVA), n	167 (100)	152 (100)	165 (100)	185 (100)	219 (64.6)
Epidural PCA (vs. Intravenous PCA), n	95 (56.9)	69 (45.4)	78 (47.3)	53 (28.6)	85 (25.1)
Maximal NRS during POD 2, 0–10	7 (5–8)	5 (4–7)	6 (5–7)	7 (5–8)	7 (5–8)
NRS at first outpatient visit after surgery, 0–10	2 (0–5)	2 (0–5)	2 (0–4)	3 (0–4)	3 (1–3)
Postoperative chemotherapy, n	80 (47.9)	56 (36.8)	50 (30.3)	59 (31.9)	108 (31.9)
Postoperative radiation therapy, n	28 (16.8)	24 (15.8)	30 (18.2)	27 (14.6)	55 (16.2)
Variable	2012 (n=397)	2013 (n=385)	2014 (n=442)	2015 (n=469)	2016 (n=499)
Female, n	184 (46.3)	157 (40.8)	184 (41.6)	214 (45.6)	224 (44.9)
Age, years	63 (56–70)	64 (55–71)	64 (57–71)	65 (58–72)	64 (57–71)
Thoracotomy (vs. VATS), n	63 (15.9)	82 (21.3)	79 (17.9)	73 (15.6)	84 (16.8)

Operation time, min	140 (115–175)	153 (125–205)	156 (130–200)	136 (110–170)	130 (109–165)
Inhalational anesthesia (vs. TIVA), n	5 (1.3)	0 (0)	41 (9.3)	0 (0)	1 (0.2)
Epidural PCA (vs. Intravenous PCA), n	52 (13.1)	74 (19.2)	62 (14.0)	51 (10.9)	61 (12.2)
Maximal NRS during POD 2, 0–10	7 (6–9)	7 (5–8)	7 (6–8)	7 (5–8)	6 (5–8)
NRS at first outpatient visit after surgery, 0–10	3 (1–3)	2 (0–3)	2 (0–4)	2 (0–3)	2 (0–3)
Postoperative chemotherapy, n	94 (23.7)	104 (27.0)	100 (22.6)	96 (20.5)	116 (23.2)
Postoperative radiation therapy, n	39 (9.8)	53 (13.8)	45 (10.2)	28 (6.0)	32 (6.4)

The values are presented as the median (interquartile range) or number (%)

Abbreviations: VATS, Video-assisted thoracic surgery; TIVA, total intravenous anesthesia; PCA, patient controlled analgesia; NRS, numeric rating scale; POD, postoperative day

Long-term incidence of chronic postsurgical pain after thoracic surgery for lung cancer: A 10-year single-center retrospective study

Susie Yoon, MD^{1,2}, Won-Pyo Hong, MD¹, Hyundeok Joo³, Hansol Kim¹, Samina Park, MD^{4,5}, Jae-Hyon Bahk MD, PhD^{1,2}, and Ho-Jin Lee, MD^{1,2}

¹ Department of Anesthesiology and Pain Medicine, Seoul National University Hospital, Seoul, Republic of Korea

² Department of Anesthesiology and Pain Medicine, Seoul National University College of Medicine, Seoul, Republic of Korea

³ Medical student, Seoul National University College of Medicine, Seoul, Republic of Korea

⁴ Department of Thoracic and Cardiovascular Surgery, Seoul National University Hospital, Seoul, Republic of Korea

⁵ Department of Thoracic and Cardiovascular Surgery, Seoul National University College of Medicine, Seoul, Republic of Korea

Number	Title	Page
Supplemental Table S1.	Supplemental Table S1. Patient characteristics and perioperative parameters between patients included and excluded in the study due to missing data.	3,4
Supplemental Table S2.	The trend for the incidence of chronic postsurgical pain (CPSP) during the first 36 months after thoracic surgery.	5
Supplemental Table S3.	Patient characteristics and perioperative parameters between patients with chronic postsurgical pain (CPSP) continued from acute	6,7

	postoperative pain (acute-onset CPSP) and with delayed-onset CPSP after the asymptomatic period after surgery (delayed-onset CPSP).	
Supplemental Table S4	Surgical and anesthesia related parameters according to the year of surgery.	8,9

Supplemental Table S1. Patient characteristics and perioperative parameters between patients included and excluded in the study due to missing data.

	Patients included in the study	Patients excluded in the study ^a	P-value ^{b,c}
Sample size, n	3200	827	
Demographic characteristics			
Age, years	64 (56–71)	65 (56–72)	0.38
Sex, n			0.02
Male	1798 (56.2)	502 (60.7)	
Female	1402 (43.8)	325 (39.3)	
Body-mass index, kg/m ²	23.6 (21.6–25.6)	23.1 (21.0–25.2)	<0.001
Current smoker, n	912 (28.5)	226 (27.3)	0.53
Background medical status, n			
ASA class I/II/III	912 (28.5)/2113 (66.0)/175 (5.5)	241 (29.1)/525 (63.5)/61 (7.4)	0.09
Diabetes mellitus	457 (14.3)	141 (17.0)	0.05
History of tuberculosis	247 (7.7)	71 (8.6)	0.45
Chronic analgesic use	134 (4.2)	52 (6.3)	0.01
Chronic opioid use	6 (0.2)	10 (1.2)	<0.001
Antipsychotics use	57 (1.8)	11 (1.3)	0.81
Preoperative chemotherapy	103 (3.2)	55 (6.7)	<0.001
Postoperative chemotherapy	863 (27.0)	274 (33.1)	<0.01
Preoperative radiation therapy	72 (2.2)	36 (4.4)	<0.01
Postoperative radiation therapy	361 (11.3)	101 (12.2)	0.49
Previous other surgeries	2036 (63.6)	511 (61.8)	0.35
Surgical characteristics			

Operation year, n			<0.001
2007/2008/2009/2010/2011/	167/152/165/185/339/	77/85/95/79/65/	
2012/2013/2014/2015/2016	397/385/442/469/499	84/78/38/106/120	
Operative technique, n			<0.001
Thoracotomy	804 (25.1)	328 (39.7)	
VATS	2396 (74.9)	499 (60.3)	
Operation type, n			<0.001
Pneumonectomy	70 (2.2)	33 (4.0)	
Lobectomy	2588 (80.9)	552 (66.7)	
Segmentectomy	241 (7.5)	31 (3.7)	
Wedge resection	283 (8.8)	158 (19.1)	
Biopsy	16 (0.5)	45 (5.4)	
Pleurodesis	0 (0)	6 (0.7)	
Combined aortic surgery	0 (0)	2 (0.2)	
Explorative surgery	2 (0.1)	0 (0)	
Operation time, min	150 (120–195)	145 (100–200)	<0.001
Maximal NRS during POD 2, 0-10	7 (5–8)	7 (5–8)	0.06
All-cause death within 36 months after surgery	297 (9.3)	263 (31.8)	<0.001

The values are presented as the median (interquartile range) or number (%).

Abbreviations: ASA, American Society of Anesthesiologist physical status classification; VATS, Video-assisted thoracic surgery; NRS, numeric rating scale; POD, postoperative day

a: Patients with history of previous thoracic surgery, those who underwent re-operation at the ipsilateral site during the study period, and treated with surgical methods other than VATS and thoracotomy were not included in this group.

b: P-value compares the patients included in the study and excluded in the study due to missing data.

c: Continuous variables were compared using the Mann-Whitney U test. Proportions were compared using the Chi-squared or Fisher's exact test according to their expected counts.

Supplemental Table S2. The trend for the incidence of chronic postsurgical pain during the first 36 months after thoracic surgery.

Time (months) after surgery	Continued CPSP	Recurrent CPSP	Newly developed CPSP	Non-CPSP	Loss to follow-up ^a	All-cause death
3	-	-	459 (14.3)	2741 (85.7)	-	-
6	249 (7.8)	-	3 (0.1)	2756 (86.1)	192 (6.0)	9 (0.3)
9	121 (3.8)	-	32 (1.0)	2555 (79.8)	493 (15.4)	33 (1.0)
12	87 (2.7)	5 (0.2)	14 (0.4)	2358 (73.7)	736 (23.0)	56 (1.8)
15	67 (2.1)	7 (0.2)	12 (0.4)	2145 (67.0)	969 (30.3)	87 (2.7)
18	68 (2.1)	4 (0.1)	11 (0.3)	2045 (63.9)	1072 (33.5)	119 (3.7)
21	63 (2.0)	6 (0.2)	8 (0.3)	1927 (60.2)	1196 (37.4)	146 (4.6)
24	54 (1.7)	4 (0.1)	9 (0.3)	1844 (57.6)	1289 (40.3)	181 (5.7)
27	44 (1.4)	2 (0.1)	2 (0.1)	1739 (54.3)	1413 (44.2)	210 (6.6)
30	39 (1.2)	3 (0.1)	5 (0.2)	1659 (51.8)	1494 (46.7)	238 (7.4)
33	38 (1.2)	3 (0.1)	2 (0.1)	1508 (47.1)	1649 (51.5)	259 (8.1)
36	35 (1.1)	4 (0.1)	1 (0.0)	1417 (44.3)	1743 (54.5)	297 (9.3)

The values are presented as the number (%).

Abbreviations: CPSP, chronic postsurgical pain

^aThis value includes all-cause death.

Supplemental Table S3. Patient characteristics and perioperative parameters between patients with chronic postsurgical pain (CPSP) continued from acute postoperative pain (acute-onset CPSP) and with delayed-onset CPSP after the asymptomatic period after surgery (delayed-onset CPSP).

	Acute-onset CPSP	Delayed-onset CPSP	P-value ^{a,b}
Sample size, n	459	99	
Demographic characteristics			
Age, years	64 (58–70)	65 (58–69)	0.97
Sex, n			0.53
Male	246 (53.6)	49 (49.5)	
Female	213 (46.4)	50 (50.5)	
Body-mass index, kg/m ²	23.6 (21.9–25.8)	24.1 (21.9–25.9)	0.69
Current smoker, n	124 (27.0)	27 (27.3)	>0.99
Background medical status, n			
ASA class I/II/III	128 (27.9)/303 (66.0)/28 (6.1)	32 (32.3)/61 (61.6)/6 (6.1)	0.67
Diabetes mellitus	65 (14.2)	17 (17.2)	0.54
History of tuberculosis	45 (8.1)	202 (7.6)	0.80
Chronic analgesic use	21 (4.6)	3 (3.0)	0.78
Preoperative chemotherapy	14 (3.1)	5 (5.1)	0.36
Postoperative chemotherapy	155 (33.8)	41 (41.4)	0.18
Preoperative radiation therapy	10 (2.2)	2 (2.0)	>0.99
Postoperative radiation therapy	65 (14.2)	20 (20.2)	0.17
Previous other surgeries	294 (64.1)	64 (64.6)	>0.99
Surgical characteristics			
Operative technique, n			0.32
Thoracotomy	154 (33.6)	39 (39.4)	
VATS	305 (66.4)	60 (60.6)	

Operation type, n			0.28
Pneumonectomy	15 (3.3)	1 (1.0)	
Lobectomy	379 (82.6)	92 (92.9)	
Segmentectomy	26 (5.7)	2 (2.0)	
Wedge resection	35 (7.6)	4 (4.0)	
Biopsy	3 (0.7)	0 (0)	
Explorative surgery	1 (0.2)	0 (0)	
Operation time, min	160 (130–215)	175 (135–223)	0.40
Type of anesthesia, n			<0.01
Inhalation agent	141 (30.7)	46 (46.5)	
TIVA	318 (69.3)	53 (53.5)	
Intraoperative bupivacaine use, n	123 (26.8)	20 (20.2)	0.22
Type of PCA, n			0.78
Intravenous PCA	352 (76.7)	74 (74.7)	
Epidural PCA	104 (22.7)	25 (25.3)	
Paravertebral PCA	3 (0.7)	0 (0)	
Maximal NRS during POD 2, 0-10	7 (5–8)	7 (6–8)	0.41
NRS at first outpatient visit after surgery, 0-10	4 (3–5)	3 (2–5)	<0.001

The values are presented as the median (interquartile range) or number (%).

Abbreviations: CPSP, chronic postsurgical pain; ASA, American Society of Anesthesiologist physical status classification; VATS, Video-assisted thoracic surgery; TIVA, total intravenous anesthesia; PCA, patient controlled analgesia; NRS, numeric rating scale; POD, postoperative day

a: P-value compares CPSP group versus non-CPSP group, b: Mann-Whitney U test used to compare medians and chi-square test or Fisher's exact test used to compare proportions

Supplemental Table S4. Surgical and anesthesia related parameters according to the year of surgery.

Variable	2007 (n=167)	2008 (n=152)	2009 (n=165)	2010 (n=185)	2011 (n=339)
Female, n	55 (32.9)	76 (50.0)	65 (39.4)	79 (42.7)	164 (48.4)
Age, years	65 (58–71)	62 (55–68)	66 (58–71)	64 (57–69)	63 (56–69)
Thoracotomy (vs. VATS), n	113 (67.7)	90 (59.2)	76 (46.1)	64 (34.6)	80 (23.6)
Operation time, min	185 (145–230)	170 (140–220)	170 (135–225)	179 (145–220)	155 (125–200)
Inhalational anesthesia (vs. TIVA), n	167 (100)	152 (100)	165 (100)	185 (100)	219 (64.6)
Epidural PCA (vs. Intravenous PCA), n	95 (56.9)	69 (45.4)	78 (47.3)	53 (28.6)	85 (25.1)
Maximal NRS during POD 2, 0–10	7 (5–8)	5 (4–7)	6 (5–7)	7 (5–8)	7 (5–8)
NRS at first outpatient visit after surgery, 0–10	2 (0–5)	2 (0–5)	2 (0–4)	3 (0–4)	3 (1–3)
Postoperative chemotherapy, n	80 (47.9)	56 (36.8)	50 (30.3)	59 (31.9)	108 (31.9)
Postoperative radiation therapy, n	28 (16.8)	24 (15.8)	30 (18.2)	27 (14.6)	55 (16.2)
Variable	2012 (n=397)	2013 (n=385)	2014 (n=442)	2015 (n=469)	2016 (n=499)
Female, n	184 (46.3)	157 (40.8)	184 (41.6)	214 (45.6)	224 (44.9)
Age, years	63 (56–70)	64 (55–71)	64 (57–71)	65 (58–72)	64 (57–71)
Thoracotomy (vs. VATS), n	63 (15.9)	82 (21.3)	79 (17.9)	73 (15.6)	84 (16.8)

Operation time, min	140 (115–175)	153 (125–205)	156 (130–200)	136 (110–170)	130 (109–165)
Inhalational anesthesia (vs. TIVA), n	5 (1.3)	0 (0)	41 (9.3)	0 (0)	1 (0.2)
Epidural PCA (vs. Intravenous PCA), n	52 (13.1)	74 (19.2)	62 (14.0)	51 (10.9)	61 (12.2)
Maximal NRS during POD 2, 0–10	7 (6–9)	7 (5–8)	7 (6–8)	7 (5–8)	6 (5–8)
NRS at first outpatient visit after surgery, 0–10	3 (1–3)	2 (0–3)	2 (0–4)	2 (0–3)	2 (0–3)
Postoperative chemotherapy, n	94 (23.7)	104 (27.0)	100 (22.6)	96 (20.5)	116 (23.2)
Postoperative radiation therapy, n	39 (9.8)	53 (13.8)	45 (10.2)	28 (6.0)	32 (6.4)

The values are presented as the median (interquartile range) or number (%)

Abbreviations: VATS, Video-assisted thoracic surgery; TIVA, total intravenous anesthesia; PCA, patient controlled analgesia; NRS, numeric rating scale; POD, postoperative day